

(You Make Me Feel Like) A Natural Woman

A Tribute to Aretha Franklin for mixed choir SAT(B) (+ Piano/Band accomp.)

W&M by Gerry Goffin, Carole King, Jerry Wexler

Arr. by Klaus "Eddy" Ackermann

♩ = 110



D G/D D6

A

Verse 1+2

E/G#

Sopran



Look-in' out on a morn-ing rain, —
When my soul was in a lost and found, —

5

G

D

S



ah - uh
ah - uh

A



I used to feel so un - in - spi - red.
you came a - long to claim — it.

T

(B)



ah - uh

9

D A/C# Bm7 A

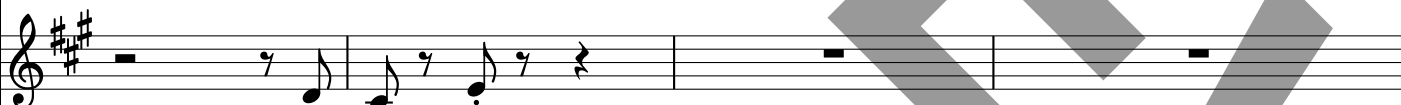
E/G#

S



And when I knew I'd have to face a - noth - er day, —
I did-n't know just what was wrong with me, —

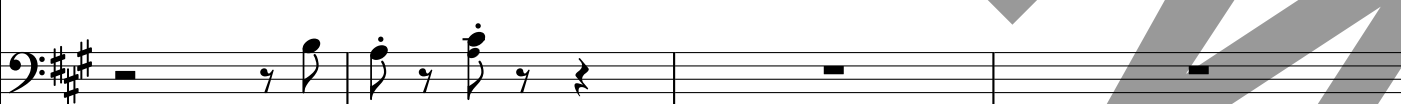
A



ah - uh uh
ah - uh uh

T

(B)



ah - uh uh

Chorus 3+4

47 D D/C# Bm7(11) Bm11/E A

close to you. You make me feel so a - live! 'Cause you make me feel,

52 DΔ A DΔ A D/F# A/E A/C# D/B A Bm7

you make me feel, you make me feel like a na - tu - ral wo-man.

Ending 1

58 Bm11/E A E/G# G D 4x

1+2) you make me feel You make me feel
3+4) ah ah

Ending 2

66 Bm11/E Bm11/E Bm11/E

you make me you make me you make me

69 rit. A D/F# A/E A/C# D/B A Bm7 Bm7/E A

feel like a na - tu - ral wo-man. Wo-man Uh